

wipro advantage



30 years
of expertise
in lighting



18 branches
across India



Customized
solutions



Pan India
after sales
support



Registered Office: Wipro Enterprises (P) Ltd. 'Wipro House', No. 8, 7th Main, 80 Feet Road, Koramangala, 1st Block, Bangalore 560034. Karnataka. India.

Business Office: Wipro Lighting, 5th Floor, Godrej Eternia - C, Old Pune-Mumbai Highway, Shivajinagar, Pune 411 005. India.
(T) 020 66098700, (F) 020 66098777



www.wiprolighting.com | Toll free no: 1800 425 1969 | helpdesk.lighting@wipro.com

Follow us on: [in](#) [t](#) [f](#) [i](#) [v](#)

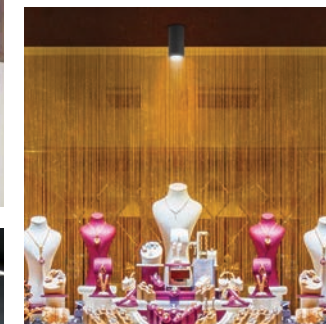
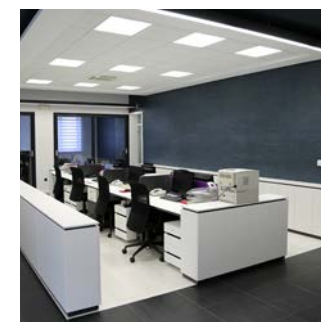
Ahmedabad: 079 - 4007 3546
Bangalore: 080 - 4150 3260
Baroda: 0265 - 239 5830 / 35 / 36 / 41 / 45
Chandigarh: +91 981 570 8102 /
+91 921 610 8102
Chennai: +91 994 049 9275
Cochin: +91 989 570 8464

Coimbatore: +91 807 820 2741
Cuttack: +91 900 703 4259
Hyderabad: 040 - 2717 6082
Indore: +91 982 799 9668
Jaipur: 0141 - 228 0014 / 491 0879
Kolkata: 033 - 4404 5886 / 87
Lucknow: 0522 - 243 4352

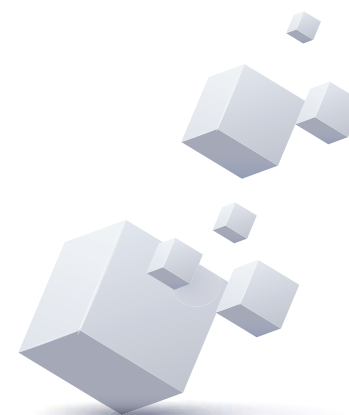
Mumbai: 022 - 6218 2000
Nagpur: 0712 - 256 9878
New Delhi: 011 - 4170 8122 / 29
Pune: 020 - 2553 5081
Raipur: 0771- 326 5725
Vishakhapatnam: +91 967 690 8080



WIPRO CLEANRAY LED LIGHTING



PRICE LIST 2023





CLEANRAY LIGHTING - SMART AND SIMPLE SOLUTIONS FOR STANDARD REQUIREMENTS

Presenting the perfect synergy between design and durability to illuminate indoor, outdoor and commercial spaces.

This over-the-counter range is high on energy efficiency, performance, reliability and service lifespan. It continues to shine through its modern and aesthetic design sensibilities, while pleasing the consumer at its highly competitive pricing in the market.

Come, explore infinite possibilities towards a brighter future and cleaner planet.





Linea | LM22

Sublime contemporary linear with high efficacy and a soothing experience.

Catalogue Reference No.	Wattage (W)	CCT (K)	MRP ₹
LM22-251-XXX-40-WX	20W	4000	₹6,310
LM22-251-XXX-57-WX	20W	5700	₹6,310
LM22-251-XXX-40-BX	20W	4000	₹6,310
LM22-251-XXX-57-BX	20W	5700	₹6,310
LM22-501-XXX-40-WX	20W	4000	₹13,105
LM22-501-XXX-57-WX	40W	5700	₹13,105
LM22-501-XXX-40-BX	40W	4000	₹13,105
LM22-501-XXX-57-BX	40W	5700	₹13,105

- 20W: 4ft length | 40W: 8ft length.
- Suspension kit included.
- WX-stands for white body.
- BX-stands for black body.

Kombat | CRCO24

Slimmest backlit and sleek profile luminaire, available with a thin bottom frame design which ensures a clutter-free lighting experience.

Catalogue Reference No.	Wattage (W)	CCT (K)	MRP ₹
CRCO24R036HP65G2	36W	6500	₹ 5,930

- Frame to be ordered separately for installation in POP/gypsum ceiling. Catalogue no. for frame is 9180P01089-LP K590.
- Also available in 4000K CCT. To order, replace 57 with 40 in the above catalogue reference no.
- Cutout dimension: 595mm x 595mm



Glitz LED | LD98

New age premium COB tiltable downlighter which creates contemporary spaces.

Catalogue Reference No.	Wattage (W)	CCT (K)	MRP ₹
LD98-900-024-40-XX*	6W	4000	₹1,550
LD98-131-024-40-XX*	9W	4000	₹2,150
LD98-181-024-40-XX**	12W	4000	₹2,390
LD98-221-024-40-XX**	15W	4000	₹2,990
LD98-271-024-40-XX***	18W	4000	₹3,710

- Available in warm 3000K option. Also available in 38° beam angle.
- Cutout dimensions: *Ø90mm | **Ø109mm | ***Ø140mm

Glitz+ LED | LD98

Contemporary COB tiltable downlighter with polycarbonate rim.

Catalogue Reference No.	Wattage (W)	CCT (K)	MRP ₹
LD98-900-024-40-G1*	6W	4000	₹1,420
LD98-131-024-40-G1**	9W	4000	₹1,970
LD98-181-024-40-G1**	12W	4000	₹2,190
LD98-221-024-40-G1***	15W	4000	₹2,740
LD98-271-024-40-G1***	18W	4000	₹3,400

- Available in warm 3000K option. Also available in 38° beam angle.
- Cutout dimensions: *Ø75mm | **Ø90mm | ***Ø115mm



Atom LED Spotlight | LD38

Compact size with superior brightness. Strong focused beam, ideal for highlighting.

Catalogue Reference No.	Wattage (W)	CCT (K)	MRP ₹
LD38-100-XXX-65-XX	1W	6500	₹290
LD38-100-XXX-40-XX	1W	4000	₹290
LD38-100-XXX-30-XX	1W	3000	₹290
LD38-150-XXX-65-XX	2W	6500	₹355
LD38-150-XXX-40-XX	2W	4000	₹355
LD38-150-XXX-30-XX	2W	3000	₹355
LD38-200-XXX-65-XX	3W	6500	₹495
LD38-200-XXX-40-XX	3W	4000	₹495
LD38-200-XXX-30-XX	3W	3000	₹495

- Cutout dimension: Ø28mm



Solas Deep Recessed | LD47

Elegant, thin rimmed, deep recessed downlighter. Ideal for contemporary interiors.

Catalogue Reference No.	Wattage (W)	CCT (K)	MRP ₹
LD47-670-024-30-WH*	6W	3000	₹1,340
LD47-111-024-30-WH*	9W	3000	₹1,540
LD47-151-024-30-WH**	12W	3000	₹1,955
LD47-171-024-30-WH**	15W	3000	₹2,465
LD47-221-024-30-WH**	18W	3000	₹2,985

- Also available in 4000K.
- Cutout dimensions: *Ø82mm | **Ø98mm
- Also available in 36° beam angle. For the same, replace 24 with 36 in the above codes.





Sleek Track Light | LD48

COB slim track lights, a perfect blend of aesthetics with functionality.

Catalogue Reference No.	Wattage (W)	CCT (K)	MRP ₹
LD48-101-036-40-WH	10W	4000	₹ 2,365
LD48-171-036-40-WH	15W	4000	₹ 2,880
LD48-221-036-40-WH	20W	4000	₹ 3,390

- Also available in black finish. To order, replace WH with BL in the above codes catalogue reference nos.
- Also available in 3000K.

Iris Slim Round | LD80

Ultra sleek, recess mounted, slim round panel light

LD80-350-XXX-60-XX**	6W	6000	₹ 1090
LD80-530-XXX-60-XX***	9W	6000	₹ 1155
LD80-101-XXX-60-XX****	12W	6000	₹ 1530
LD80-131-XXX-60-XX*****	15W	6000	₹ 1705
LD80-171-XXX-60-XX*****	18W	6000	₹ 2475
LD80-281-XXX-65-G1*****	24W	6000	₹ 2715

- Also available in 4000K and 3000K.
- Cutout dimensions: **Ø110mm | ***Ø140mm | ****Ø160mm | *****Ø180mm | *****Ø205mm | *****Ø290mm.

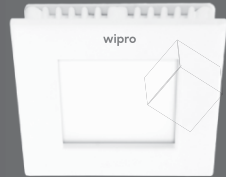


Iris Slim Square | LD81

Ultra sleek, recess mounted, slim square panel light.

Catalogue Reference No.	Wattage (W)	CCT (K)	MRP ₹
LD81-350-XXX-60-XX**	6W	6000	₹ 1,090
LD81-530-XXX-60-XX***	9W	6000	₹ 1,155
LD81-101-XXX-60-XX****	12W	6000	₹ 1,530
LD81-131-XXX-60-XX*****	15W	6000	₹ 1,705
LD81-171-XXX-60-XX*****	18W	6000	₹ 2,475
LD81-281-XXX-60-XX*****	24W	6000	₹ 2,715

- Also available in 4000K and 3000K.
- Cutout dimensions: **110mm x 110mm | ***140mm x 140mm | ****160mm x 160mm | *****180mm x 180mm | *****205mm x 205mm | *****285mm x 285mm.



Iris Neo Nextgen | LD95

Recessed, slim LED, round downlighter. Aesthetic white rim moulded in engineered plastic.

Catalogue Reference No.	Wattage (W)	CCT (K)	MRP ₹
LD95-670-XXX-65-G1*	6W	6500	₹ 935
LD95-101-XXX-65-G1*	9W	6500	₹ 1,155
LD95-141-XXX-65-G1**	12W	6500	₹ 1,375
LD95-171-XXX-65-G1**	15W	6500	₹ 1,485
LD95-221-XXX-65-G1***	18W	6500	₹ 1,750

- Also available in 4000K.
- Cutout dimensions: *Ø100mm | **Ø150mm | ***Ø205mm.



Iris Neo Nextgen | LD96

Recessed, slim LED, square downlighter. Aesthetic white rim moulded in engineered plastic.

Catalogue Reference No.	Wattage (W)	CCT (K)	MRP ₹
LD96-670-XXX-65-G1*	6W	6500	₹ 935
LD96-101-XXX-65-G1*	9W	6500	₹ 1,155
LD96-141-XXX-65-G1**	12W	6500	₹ 1,375
LD96-171-XXX-65-G1**	15W	6500	₹ 1,485
LD96-221-XXX-65-G1***	18W	6500	₹ 1,750

- Also available in 4000K.
- Cutout dimensions: *100mm x 100mm | **150mm x 150mm | ***205mm x 205mm

EOS Round | LD66R

Surface mounted, trimless LED downlight.

Catalogue Reference No.	Wattage (W)	CCT (K)	MRP ₹
LD66R-670-XX-65-SM	6W	6500	₹ 990
LD66R-111-XX-65-SM	9W	6500	₹ 1,100
LD66R-151-XX-65-SM	12W	6500	₹ 1,430
LD66R-171-XX-65-SM	15W	6500	₹ 1,650
LD66R-221-XX-65-SM	18W	6500	₹ 2,090
LD66R-301-XX-65-SM	24W	6500	₹ 2,420

- Also available in 4000K. To order, replace 65 with 40 in the above catalogue reference nos.

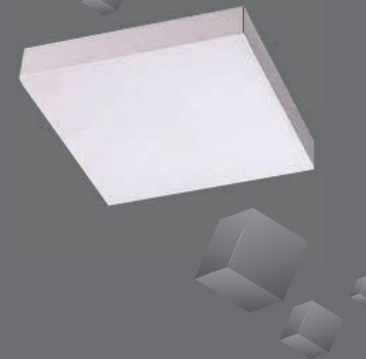


EOS Square | LD66S

Surface mounted, trimless LED downlight.

Catalogue Reference No.	Wattage (W)	CCT (K)	MRP ₹
LD66S-670-XX-65-SM	6W	6500	₹ 990
LD66S-111-XX-65-SM	9W	6500	₹ 1,100
LD66S-151-XX-65-SM	12W	6500	₹ 1,430
LD66S-171-XX-65-SM	15W	6500	₹ 1,650
LD66S-221-XX-65-SM	18W	6500	₹ 2,090
LD66S-301-XX-65-SM	24W	6500	₹ 2,420

- Also available in 4000K. To order, replace 65 with 40 in the above catalogue reference nos.



Iris Slim Surface Mounted | LD81

Ultra sleek, surface mounted, slim square panel light



Catalogue Reference No.	Wattage (W)	CCT (K)	MRP ₹
LD81-350-XXX-60-SM	6W	6000	₹1,265
LD81-101-XXX-60-SM	12W	6000	₹1,815
LD81-131-XXX-60-SM	15W	6000	₹2,145
LD81-171-XXX-60-SM	18W	6000	₹2,850
LD81-271-XXX-60-SM	24W	6000	₹3,000

• Also available in 4000K and 3000K.

Iris Slim Surface Mounted | LD80

Ultra sleek, surface mounted, slim round panel light

Catalogue Reference No.	Wattage (W)	CCT (K)	MRP ₹
LD80-350-XXX-60-SM	6W	6000	₹1,265
LD80-101-XXX-60-SM	12W	6000	₹1,815
LD80-131-XXX-60-SM	15W	6000	₹2,145
LD80-171-XXX-60-SM	18W	6000	₹2,850
LD80-281-XXX-60-SMG1	24W	6000	₹3,000

• Also available in 4000K and 3000K.

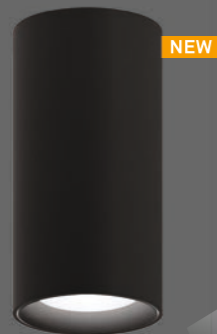


Cylindro Surface Mounted Downlight | LD11

Designer surface downlight

Catalogue Reference No.	Wattage (W)	Beam Angles	CCT (K)	MRP ₹
LD11-520-24-65-XX	6W	24°	6500	₹1,800
LD11-101-24-65-XX	10W	24°	6500	₹2,600
LD11-201-38-65-XX	20W	38°	6500	₹4,000

• Also available in 3000K & 4000K.

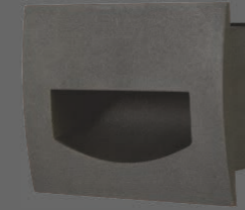


Step Light | LT53

Highly efficient and premium, long life LED step lighting fixture for 3 module switch box.

Catalogue Reference No.	Wattage (W)	CCT (K)	MRP ₹
LT53-260-XXX-30-XX	6W	3000	₹1,200
LT53-260-XXX-40-XX	6W	4000	₹1,200

• Cutout dimensions: 65mm x 36mm



Trim Neo | LL20

Sleek and seamless profiled, extruded aluminium/polycarbonate batten with an efficient diffuser to illuminate work and retail spaces.

Catalogue Reference No.	Wattage (W)	CCT (K)	MRP ₹
LL20-620-XXX-65NE3 *	5W	6500	₹385
LL20-111-XXX-65NE3**	10W	6500	₹605
LL20-111-XXX-65AL1**	10W	6500	₹825
LL20-221-XX-65ALNE***	20W	6500	₹650
LL20-281-XXX-65AL1***	20W	6500	₹1,310
LL20-221-XXX-65NE3***	20W	6500	₹1,045
LL22-511-XXX-65-G2***	36W	6500	₹2,035

• Catalogue nos. ending with AL1 & ALNE has aluminium housing.
• Length: *1ft, **2ft, ***4ft.



Trim Neo Senso | LL28

Polycarbonate batten with inbuilt occupancy sensor. Saves energy and costs.

Catalogue Reference No.	Wattage (W)	CCT (K)	MRP ₹
LL28-221-SN-65-XX*	20W	6500	₹1,800

• Length - *4ft.



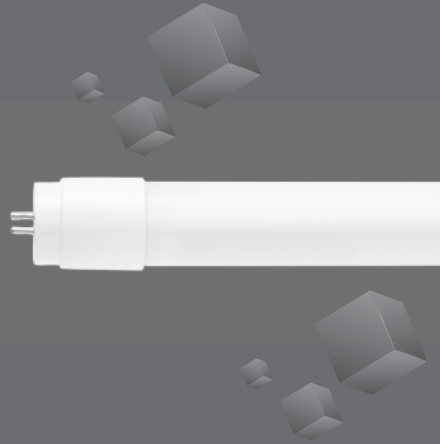
Bedside Lamp | LL14

Aluminium die cast body for greater heat dissipation. Ideal for green lighting solutions

Catalogue Reference No.	Wattage (W)	CCT (K)	MRP ₹
LJ14-020-XXX-30-OP	3W	3000K	₹1,800
LJ14-020-XXX-40-OP	3W	4000K	₹1,800
LJ14-020-XXX-65-OP	3W	6500K	₹1,800

Dimensions : 510mm x 80mm x 25.75 mm





Pro LED | LL13

Linear lamp with aluminium/polycarbonate housing for optimum light output. Specially designed diffuser to avoid direct view of LEDs.

Catalogue Reference No.	Wattage (W)	CCT (K)	MRP ₹
LL13-181-650-G1	18W	6500	₹ 1,200
LL13-181-65	18W	6500	₹ 1,500
LL13-181-65SE	20W	6500	₹ 1,550
LL13-181-65SESL1G1	20W	6500	₹ 1,375

- Catalogue no. ending with SE has aluminium housing.
- SESL has double side input. The rest are all with single side input.
- Length - 4ft.

LED Channel | WIO92

Channel suitable for use with T8 LED lamp.

Catalogue Reference No.	Wattage (W)	CCT (K)	MRP ₹
WIO921208P	1x18/20W	-	₹605
WIO922208P	2x18/20W	-	₹825
WIO921208	1x18/20W	-	₹715
WIO922208	2x18/20W	-	₹935

- LED lamp to be ordered separately.
- Product ending with P is pre-coated. The other codes are products with powder coating.

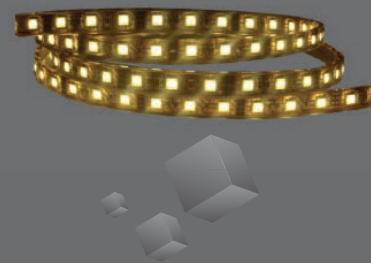


Formz LED | LS06

Non-integral, flexible LED strip light with high brightness, for indoor and outdoor applications. The strip can be cut at marked intervals to suit the desired length.

LS06-005-120-30-50	5W	3000	₹2,035
LS06-010-120-40-50	10W	3000	₹2,365
LS06-015-120-65-50	15W	3000	₹2,960
LG34-025-12-1AIP20	5W	3000	₹935
LG34-050-12-2AIP20	10W	3000	₹1,595
LG-34-075-24-3AIP20	15W	3000	₹1,815

- Also available in 4000K and 6500K.
- LG34-025 - 1 unit is suitable for 1 no. (5m) spool of LS06-005. | LG34-070-1 unit is suitable for 1 no. (5m) spool of LS06-010 | LG34-75 - 1 unit is suitable for 1 no. (5m spool) of LS06-15 | Order driver separately. Driver is for indoor use only.



Brillante | LL26

LED bulb, ideal for commercial and industrial applications, comes with B22 holder.

Catalogue Reference No.	Wattage (W)	CCT (K)	MRP ₹
LL26-371-65-B22	20W	6500	₹825
LL26-501-65-B22	40W	6500	₹1,155
LL26-621-65-B22	50W	6500	₹1,485

- Also available in 4000K.

Skyline Neo Streetlight | LR26

Slim, minimalist aluminium pressure die cast IP66 streetlight, with lens cover.

Catalogue Reference No.	Wattage (W)	CCT (K)	MRP ₹
LR26-251-XXX-65-XX	20W	6500	₹2,970
LR26-371-XXX-65-XX	30W	6500	₹4,125
LR26-621-XXX-65-XX	50W	6500	₹5,100
LR26-112-XXX-65-XX	100W	6500	₹6,200



Alpha Neo Floodlight | LF37

Compact aluminium die cast housing IP66 floodlight.

Catalogue Reference No.	Wattage (W)	CCT (K)	MRP ₹
LF37-251-XXX-65-XX	20W	6500	₹2,420
LF37-371-XXX-65-XX	30W	6500	₹2,750
LF37-501-XXX-65-XX	40W	6500	₹3,575
LF37-621-XXX-65-XX	50W	6500	₹5,000
LF37-122-XXX-65-XX	100W	6500	₹6,100



Moon+ | LW21

Downlight / Walllight with compact aluminium die cast housing with IP54 protection.

Catalogue Reference No.	Wattage (W)	CCT (K)	MRP ₹
LW21-111-XXX-57-XX	10W	5700	₹2,450
LW21-111-XXX-40-XX	10W	4000	₹2,450



EXTERIO
OUTDOOR RANGE

BRIGHTEN YOUR OUTDOORS



What's the point of an exquisite building exterior if you cannot see it after sunset? Can gardens and landscaped pathways be enjoyed while shrouded in darkness? The Exterio range of outdoor lights from Cleanray let your building's aesthetics shine even on the darkest nights.

Guide guests on a stroll under the stars, create a dramatic backdrop for dinners on the lawn, or light up your nightly celebrations. Allow Exterio to transform your outdoor spaces with a dose of drama and design!





Exterio Triangular Wall Light | LW23T

Exterio IP65 triangular wall light - Up-Down.

Catalogue Reference No.	Wattage (W)	CCT (K)	MRP ₹
LW23T-101-X-30-UDX	10W	3000	₹ 5,015
LW23T-101-X-40-UDX	10W	4000	₹ 5,015
LW23T-101-X-65-UDX	10W	6500	₹ 5,015

* UD for up down light.



Exterio Round Wall Light | LW22C

Exterio IP65 round wall light Up Down.

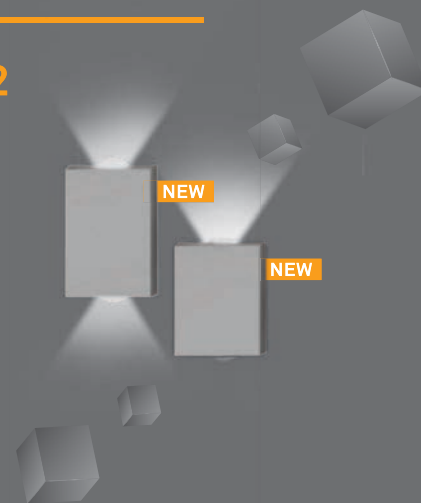
Catalogue Reference No.	Wattage (W)	CCT (K)	MRP ₹
LW22C-101-X-30-UDX	10W	3000	₹3,245
LW22C-101-X-40-UDX	10W	3000	₹3,245
LW22C-101-X-65-UDX	10W	3000	₹3,245

Exterio Square Wall Light | LW22

Exterio IP65 square wall light - Up-Down.

Catalogue Reference No.	Wattage (W)	CCT (K)	MRP ₹
LW22-150-XXX-30-XX	2W	3000	₹1,650
LW22-150-XXX-40-XX	2W	4000	₹1,650
LW22-150-XXX-65-XX	2W	6500	₹1,650
LW22-300-XX-30-UDX	4W	3000	₹2,500
LW22-300-XX-40-UDX	4W	4000	₹2,500
LW22-300-XX-65-UDX	4W	6500	₹2,500

* UD for up down light, XX for one sided light.



Bulkhead | LW19

Bulkhead IP65 with plastic body.

Catalogue Reference No.	Wattage (W)	CCT (K)	MRP ₹
LW19-141-XXX-30-XX	10W	3000	₹1,500
LW19-141-XXX-40-XX	10W	4000	₹1,500
LW19-141-XXX-65-XX	10W	6500	₹1,500



Exterio Rectangular Wall Light | LW23

Exterio IP65 rectangular wall light - Up-Down.

Catalogue Reference No.	Wattage (W)	CCT (K)	MRP ₹
LW23-520-XXX-30-XX	2W	3000	₹2,950
LW23-520-XXX-40-XX	2W	4000	₹2,950
LW23-520-XXX-65-XX	2W	6500	₹2,950
LW23-101-XX-30-UDX	4W	3000	₹3,540
LW23-101-XX-40-UDX	4W	4000	₹3,540
LW23-101-XX-65-UDX	4W	6500	₹3,540

* UD for up down light, XX for one sided light.

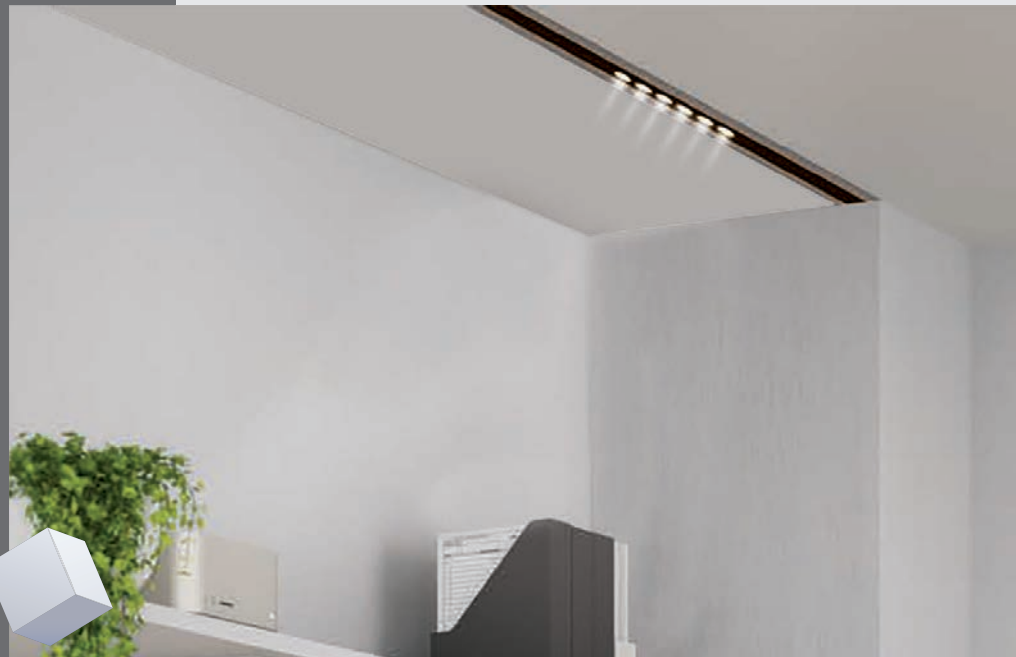


Bush Light | LF05

Aluminum die cast IP65 bush light with spike.

Catalogue Reference No.	Wattage (W)	CCT (K)	MRP ₹
LF05-800-040-30-XX	10W	3000	₹2,500
LF05-800-040-40-XX	10W	4000	₹2,500
LF05-800-040-65-XX	10W	6500	₹2,500

MAGNETO MAGNETIC TRACK LIGHT



Are you even famous if the spotlight isn't following you? Presenting concentrated lighting to highlight the choicest of jewellery, arts and artefacts, to give them the attention they deserve. Adjustable spotlights that create the magic in art galleries, museums, homes and hotels.





Magneto SpotLight | LD17

Catalogue Reference No.	Wattage (W)	CCT (K)	MRP ₹
LD17SQ-220-24-30HB	3W	3000	₹ 2,124
LD17SQ-220-24-40HB	3W	4000	₹ 2,124
LD17RO-220-24-30HB	3W	3000	₹ 2,124
LD17RO-220-24-40HB	3W	4000	₹ 2,124

• Product size - L35mm*W22mm*H45mm



Magneto Angular Collimator | LD17LA

Catalogue Reference No.	Wattage (W)	CCT (K)	MRP ₹
LD17LA-671-36-30-B	6W	3000	₹5,364
LD17LA-671-36-40-B	6W	4000	₹5,364

• Product size - L112mm*W22mm*H110mm

Magneto Linear Collimator | LD17L

Catalogue Reference No.	Wattage (W)	CCT (K)	MRP ₹
LD17L-671-036-30-B	6W	3000	₹ 2,145
LD17L-671-036-40-B	6W	4000	₹ 2,145
LD17L-151-036-30-B	12W	3000	₹ 2,575
LD17L-151-036-40-B	12W	4000	₹ 2,575

• Product size - L112mm*W22mm*H45mm & L224mm*W22mm*H45mm



Magneto Angular Collimator | LD17LA

Catalogue Reference No.	Wattage (W)	CCT (K)	MRP ₹
LD17LA-151-36-30-B	12W	3000	₹7,509
LD17LA-151-36-40-B	12W	4000	₹7,509

• Product size - L220mm*W22mm*H110mm



Magneto Linear | LD17L

Catalogue Reference No.	Wattage (W)	CCT (K)	MRP ₹
LD17L-101-XXX-30-B	10W	3000	₹2,639
LD17L-101-XXX-40-B	10W	4000	₹2,639
LD17L-251-XXX-30-B	20W	3000	₹3,948
LD17L-251-XXX-40-B	2W	4000	₹3,948

• Product size- L300mm*W22mm*H45mm & L600mm*W22mm*H45mm



Magneto Moon Collimator | LD17M

Catalogue Reference No.	Wattage (W)	CCT (K)	MRP ₹
LD17M-111-024-30-B	9W	3000	₹4,076
LD17M-111-024-40-B	9W	4000	₹4,076

• Product size - 95mm*135mm



Magneto Tracklight | LD17T

Catalogue Reference No.	Wattage (W)	CCT (K)	MRP ₹
LD17T-671-024-30-B	7W	3000	₹ 3,865
LD17T-671-024-40-B	7W	4000	₹ 3,865

• Product size - 35mm*80mm

Magneto Tracklight | LD17T

Catalogue Reference No.	Wattage (W)	CCT (K)	MRP ₹
LD17T-151-024-30-B	12W	3000	₹4,505
LD17T-151-024-40-B	12W	4000	₹4,505

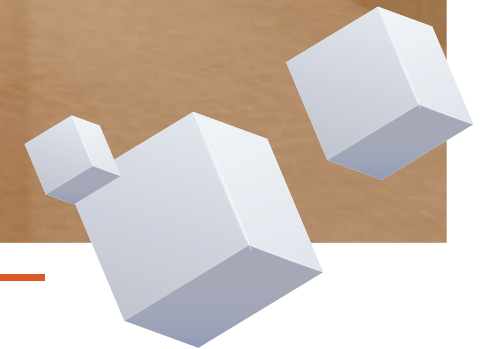
• Product size - 45mm*100mm

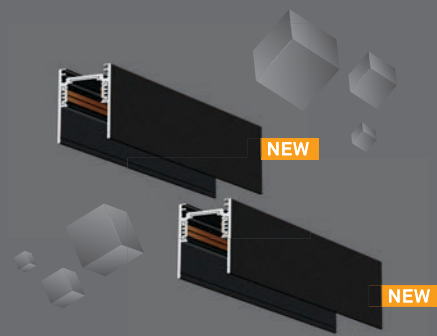


Magneto Tracklight | LD17T

Catalogue Reference No.	Wattage (W)	CCT (K)	MRP ₹
LD17T-304-024-30-B	24W	3000	₹5,365
LD17T-304-024-40-B	24W	4000	₹5,365

• Product size - 70mm*160mm





Magneto Surface Mounted Track

Surface Channel

Catalogue Reference No.	Length (M)	MRP ₹
LDX171-1C-1M-SM	1M	₹ 5,365
LDX172-1C-2M-SM	2M	₹ 10,730

- Available in sizes of 1m & 2m
- Cutout dimensions: 27mm | 30mm



Magneto Track Fixed Joints

Catalogue Reference No.	MRP ₹
LDX1711-JNT-FIX	₹925

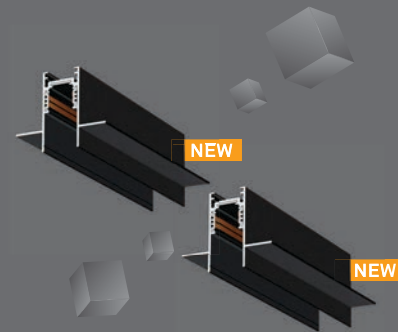
- Product size - L112mm*W22mm*H110mm

Magneto Recess Mounted Track

R e c e s s e d

Catalogue Reference No.	Length (M)	MRP ₹
LDX174-1C-1M-RM	1M	₹6,000
LDX175-1C-2M-RM	2M	₹12,015

- Available in sizes of 1m & 2m
- Cutout dimensions: 27mm | 30mm



Magneto Track Flexible Joints

Catalogue Reference No.	MRP ₹
LDX1713-CNT-FLX	₹1,350

- Product size - L220mm*W22mm*H110mm



Magneto Surface Mounted Joints

Surface Channel

Catalogue Reference No.	Type	MRP ₹
LDX177-1C-90°VL-S	Vertical	₹1,500
LDX178-1C-90°HL-S	Horizontal	₹1,500

Magneto Track Connector Input Line

Catalogue Reference No.	MRP ₹
LDX1712-CNT-INP	₹925

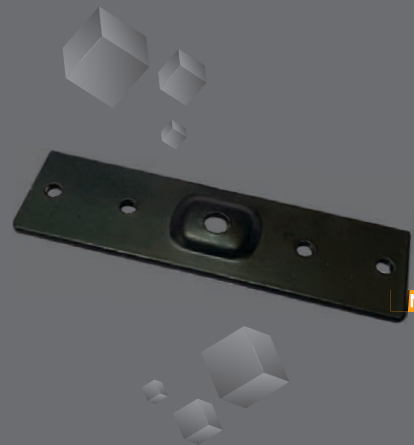
- Product size - 95mm*135mm

Magneto Recessed Mounted Joints

R e c e s s e d

Catalogue Reference No.	Type	MRP ₹
LDX177-1C-90°VL-R	Vertical	₹1,500
LDX178-1C-90°HL-R	Horizontal	₹1,500





Magneto Track Alignment Bracket

Catalogue Reference No.	MRP ₹
LDX1714-ALG-BKT	₹ 235

- Track Alignment Jointer with M4 Screws (2pcs screw)

NEW

Magneto Suspension Kit

Stainless steel body

Catalogue Reference No.	Length (M)	MRP ₹
LDX1715-SUS-2M	2M	₹710



NEW

Driver | LG34

Aluminium body, surge protection on 3KVA

Catalogue Reference No.	MRP ₹
LG34-100-050-2100	₹5,365
LG34-200-050-4200	₹7,725

- Product size- L300mm*W22mm*H45mm & L600mm*W22mm*H45mm



NEW

NEW

Items to be phased out (Available till stock lasts)

Description	Reference No.	Wattage (W)
Moon (Round)	LW01-101-XXX-60-XX	9w
Moon (Square)	LW02-101-XXX-60-XX	9w
Pro LED Lamp T5	LL13-181-65-T5	18w
Pro LED Lamp Double Side Input	LL13-181-65SESL	20w

Terms and conditions

- Prices are in Indian Rupees.
- MRP is inclusive of GST. However, authorized Wipro sales persons/stockists can sell below the MRP.
- All prices are subject to Wipro's general terms & conditions of business.
- Prices are subject to change without notice, as per Company discretion.
- This price list supersedes all earlier price lists.
- The Company reserves the right to issue amendments, which may arise due to any errors in the price list.
- Goods are dispatched by us at purchaser's risk. All claims for loss, damage or shortage will be filed by the purchasers directly with the carriers.
- Orders should be placed in multiples of case lot.
- All orders shall be placed in writing.
- Items other than those included in the price list, stand phased out from the range.
- All fixtures will be supplied as per our normal specifications. For additional features please contact the nearest Wipro office for details.
- Disputes, if any, are subject to Pune jurisdiction only.
- Related wattage and CCT are nominal and BIS tolerance is applicable on the same. Innovation and improvement are a way of life at Wipro. All rights reserved. Reproduction of this data, in part or in whole, without permission, is prohibited. Care has been taken to ensure that the information content within is correct. We reserve the right to modify the product without prior intimation. Photographs shown herein are indicative. Customers are advised to reconfirm the data or product dimensions before purchase, with our local office.

Branch Offices

<p>E40/7, Okhla Industrial Area, Phase-II, New Delhi - 011 020. Tel: 011 - 4170 8122 / 29</p>	<p>Lotus Corporate Park, Unit No 1401 – 1402, 14th Floor, C Wing, Graham Firth Steel Compound, Western Express Highway, Goregaon (E), Mumbai - 400 063. Tel: 022 - 6218 2000</p>
<p>No.139, 7th Cross, N S Palya, Off. Bannerghatta Road, Bangalore - 560 076. Tel: 080 - 4150 3260</p>	<p>4th Floor, Svalar Square, 15, North Phase, Guindy Industrial Estate, Ekkaduthangal, Chennai - 600 032. Mob: +91 994 049 9275</p>
<p>3, Pretoria Street, 3rd Floor, Kolkata - 700 071. Tel: 033 - 4404 5886 / 87</p>	<p>Bhosale Heights, 1195/5, Fergusson College Road, Pune - 411 005. Tel: 020 - 2553 5081</p>
<p>Surya Towers, 6th floor, Sardar Patel Road, Hyderabad - 500 003. Tel: 040 - 2717 6082</p>	<p>Precto Pipes Compound, Village Jhungian, PO Dayalpura Sodhian, Dist. S A S Nagar, Dayalpura - 140 603. Mob: +91 956 993 3873 / 72 / 71, +91 921 610 8102</p>
<p>United Compound, A B Road, Dewas Naka, Indore - 452 010. Mob: +91 982 799 9668</p>	<p>E/149, Transport Nagar, Lucknow Kanpur Road, Lucknow - 226 012. Tel: 0522 - 243 4352</p>
<p>Khata No. 349/536, Plot No. 52, Andhei Sahi, New Industrial Estate, Jagatpur, Cuttack - 754 200. Mob: +91 900 703 4259</p>	<p>409 - 410, Scarlet Gateway, Opp. Rivera Anatalia, Corporate Road, Nr. Prahladnagar Garden, Satellite, Ahmedabad - 380 015. Tel: 079 - 4007 3546</p>
<p>Flat No. 8, Plot No. 191, 1st Floor, Rachna Apartment, Cement Road, Shivaji Nagar, Nagpur - 440 010. Tel: 0712 - 256 9878</p>	<p>Khasra No. 48-49/2, Khedia Business Park, Tatibanth, Raipur - 492 099. Tel: 0771 - 326 5725</p>
<p>VI/409-D, Valomkottil Building, Opp. BMC, Sea Port-Airport Road, P.O. Thrikkakkara, Cochin - 682 021. Mob: +91 989 570 8464</p>	<p>Plot No. 90/24, D-Block, IDA, Autonagar, Vizag - 530 012. Mob: +91 967 690 8080</p>
<p>9/10, Sri Vankatram Complex, VLB Nagar, OPP VLB Arts & Science College, Kovaiipudur Road, Kuniyamuthur, Coimbatore - 641 042. Mob: +91 807 820 2741</p>	<p>B - 16/17, Palsania Complex, Near T B Hospital, Subhash Nagar Shopping Centre, Jaipur - 320 016. Tel: 0141 - 228 0014 / 491 0879</p>